

THERMAL PRINT HEAD

ND48

SHEC SHANDONG HUALING ELECTRONICS CO., LTD.

#159, Torch Road, Hi-Tech. IDZ
Weihai Shandong, China
Tel: 86-631-5698013
Fax: 86-631-5685493
E-mail: shec@163169.net

REVISION					<u>Approved</u>
Rev	Description	Date	Approved	Drawn	
A	-----	06-3-17	S.Hosokawa	JM.Liu	<i>S. Hosokawa</i>
					<u>Checked</u> <i>Xu Haifeng</i>
					<u>Drawn</u> <i>Liu Jianmei</i>

1. Description

This specification is applied to ND48 thermal print head.

2. Scope

The ND48 is a thermal print head which has heat elements which produce 384 dots with 8 dots/mm by means of a high density thick film process. It also includes C-MOS ICs; Which operate as 384 bits shift-registers, latches and switching transistors to drive heat elements.

3. Outline

Item	Specification	Note
Dimension	Fig.5	
Schematic diagram	Fig.3	
Pin assignment	Table.3	
Print width	48 mm	
Number of heaters	384 dots	
Heater resolution	8 dots/mm	
Heater pitch	0.125 mm	
Printed dot dimension	0.11mm×0.13 mm	Nominal
Heater resistance	$\bar{R}=176 \Omega \pm 4\%$ $R=\bar{R} + 5\%-10\%$	
Specifications for driver ICs	Table.2	
Number of driver ICs	64bits × 6	
Number of data inputs	1 serial input	
Number of strobos	6	
Logic power supply	5 V × 30 mA	at 5 MHz
Specification for Thermistor	$R_{25}=30K \Omega \pm 5\%$, $B=3,950K \pm 3\%$	Table. 1

4. Maximum ratings

Parameter	Symbol	Specification	Note
Heater energy consumption	Eomax	0.3 mJ/dot	5 ms/line
Head voltage	VH	10 V	Between Connectors
Logic voltage	Vdd	Vdd=7V	
Environment temperature	Ta	-5 ° C ~ +50 ° C	Operating(The printed optical density is not guaranteed between -5 ° C ~ +5 ° C)
		- 40 ° C ~ +80 ° C	Non-operating
Environment humidity		10 ~ 90%RH	Non-condensing
Maximum operating temperature	Ts	Continuous:65° C 30min. MAX.	Thermistor temp.
		Peak:80° C Thermistor temp.	When 80° C was detected, Printing must be stopped, and wait until 60° C

5. Standard printing conditions

Parameter	Symbol	Recommended operating conditions	Note
Speed		5 ms/line	
		1 inch/sec	
Heater power consumption	Po	0.12 W/dot	$\bar{R}=176\Omega$
Heat voltage	VH	5 V	Between Connectors
Heater energy consumption	Eo (ts)	5°C 0.26mJ/dot (2.09ms)	$\bar{R}=176\Omega$ 64 dots simultaneously ON (Note 1)
		25°C 0.24 mJ/dot (1.93 ms)	
		40°C 0.22mJ/dot (1.77 ms)	
Supply current	Io	26.6 mA/dot	$\bar{R}=176\Omega$
Timing chart		Fig. 2	
Platen pressure		7.2~ 9.5N / TPH	
Platen hardness		40~50deg	
Platen diameter		Φ10 Max.	
Scanning resolution		8 line/mm	
Thermal paper		F24OAC / F220-VP MITSUBISHI PAPER MILL CO., LTD.	
Optical density		1.1 OD Min.	(Note 2)

(Note 1) Supply energy is defined by the following formula.

$$E_o = I_o^2 \bar{R} t_s = \frac{(VH)^2 \cdot \bar{R} \cdot t_s}{(\bar{R} + R_{ic})^2}$$

$R_{ic} = 12\Omega$: Driver IC "ON" resistance

t_s : Strobe pulse width

VH : Head voltage

\bar{R} : Heater average resistance

(Note 2) Printed optical density is measured at 10mm intervals after the starting point. Printed optical density is measured by RD-914 reflector optical density meter or equivalent .

6. Life expectancy

The life expectancy under 12.5% printing duty of less at 25° C is defined by the following whichever earlier comes.

Item	Specification	Note
Number of pulses	1×10^8 pulses	
Run length	50 Km	

7. Warning during use

7.1 Strobe signal

During head power supply ON/OFF sequence ,strokes should be kept "disable".

7.2 Stability of IC operation

Care should be taken for stable operation of driver ICs as indicated bellow. (Fig.1)

(1) If the voltage including surge exceeds maximum rating of driver IC, the TPH may burn out by latch-up. Care should be taken especially when head current changes by strobes or at the ON/OFF sequence. The voltage shall be kept within the following voltage.

VH	: 0V ~ +10V
Vdd	: 0V ~ +7V
Other signals	: GND -0.5V ~ Vdd+0.5V

7.3 The heater and driver ICs are electrostatically sensitive. Care should be taken not to touch connectors with hands or an electrostatically charged object. It is recommended that brushes near the head be provided to discharge electrostatic build up.

7.4 On the surface near the heater, do not apply any hard material. The abrasion resistant layer is fragile to mechanical impact.

7.5 Ink dregs adhered to the heater should be wiped off softly with a soft cloth dipped alcohol or detergent. Do not use sandpaper or equivalent.

7.6 Keep hard particles out of the heater surface. Hard particles may scratch the abrasion resistant layer.

7.7 Maximum number of heaters for simultaneous is 192.

7.8 When the printer is on standby, the thermal head (VH) must be switched off.

Fig. 1 Recommend Connection

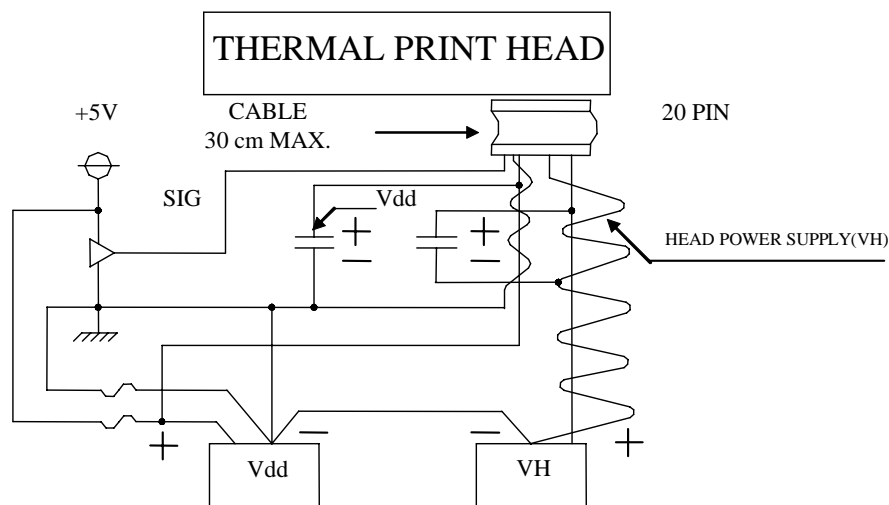


Table. 1 Thermistor

$$R_{25} = 30K\Omega \pm 5\%, B_{CONST} = 3950\text{kelvin} \pm 3\%, R = R_{25} e^{B(1/T - 1/T_{25})}$$

Temperature (° C)	Thermistor Resistance (R)		
	Min. (K Ω)	Typ. (K Ω)	Max. (K Ω)
-40.0	717	843	989
-35.0	535	623	723
-30.0	405	466	535
-25.0	308	352	400
-20.0	238	269	303
-15.0	185	208	232
-10.0	145	161	178
-5.0	113	124	137
0.0	88.7	96.8	105
5.0	69.9	75.7	81.7
10.0	55.4	59.5	63.8
15.0	44.1	47.1	50.1
20.0	35.4	37.5	39.6
25.0	28.5	30.0	31.5
30.0	22.8	24.2	25.5
35.0	18.3	19.6	20.8
40.0	14.9	15.9	17.1
45.0	12.1	13.1	14.1
50.0	9.92	10.8	11.7
55.0	8.16	8.91	9.7
60.0	6.76	7.41	8.12
65.0	5.62	6.2	6.83
70.0	4.7	5.21	5.77
75.0	3.95	4.4	4.9
80.0	3.34	3.74	4.18

Table 2 C-MOS Driver IC

Table 2.1 Electrical characteristics for driver IC.

Absolute maximum ratings for driver ICs.

Parameter	Symbol	Test conditions	Ratings	Unit
Supply voltage	V_{dd}	Surge	0 ~ 7	V
	V_H	Surge	0 ~ 10	V
Input voltage for logic	V_{IN}		0 ~ $V_{dd} + 0.5$	V

Recommended operating conditions

Parameter	Symbol	Test conditions	Recommendations			Unit
			Min.	Typ.	Max.	
Supply voltage	V_{dd}		4.5	5.0	5.5	V
	V_H	Supply voltage for VH	4.2	5.0	8.5	V
Input voltage for logic	V_{IH}	(Note 1)	$0.7 \times V_{dd}$		V_{dd}	V
	V_{IL}				$0.3 \times V_{dd}$	V
Clock frequency	f_{CLK}				5.0	MHz

(Note 1) Recommended driver IC is 74HC244 or equivalent.

Table 2.2 Electrical characteristics for driver IC.

Parameter	Symbol	Test conditions	Ratings			Unit
			Min.	Typ.	Max.	
Input current	\overline{LATCH}	(Note 1) $V_{dd} = 5V$ $V_{IH} = 5V$			3.0	μA
	STROBE				55	μA
	CLOCK				3.0	μA
	DATA IN				0.5	μA
	\overline{LATCH}	I_{IL} $V_{dd} = 5V$ $V_{IL} = 0V$	-3.0			μA
	STROBE		-0.5			μA
	CLOCK		-3.0			μA
	DATA IN		-0.5			μA
Output voltage of drivers (Heater supply voltage)	V_{OL}	$I_{OL} = 60mA$		0.7	0.9	V
Leak current of drivers	I_{OH}	$V_H = 7V$			1.0	$\mu A/dot$
Logic supply current	I_{dd}	$f_{CLK} = 5MHz$ $SI = 1/2 f_{CLK}$		9.6	30	mA

(Note 1) Each STROBE includes pull-down resistance of $300K\Omega \pm 50\%$ per IC.

Table 2.3 Switching characteristics for driver ICs.

Parameter	Symbol	Test conditions	Ratings			Unit
			Min.	Typ.	Max.	
Clock frequency	f_{MAX}				5	MHz
Clock pulse width	tw(CLK)		70			ns
Data setup time	tsu(D)		40			ns
Data hold time	th(D)		40			ns
Latch setup time	tsu(LA)		100			ns
Latch pulse width	tw(LA)		100			ns
Strobe to driver Output delay time	td(DO)				13.0	μ s

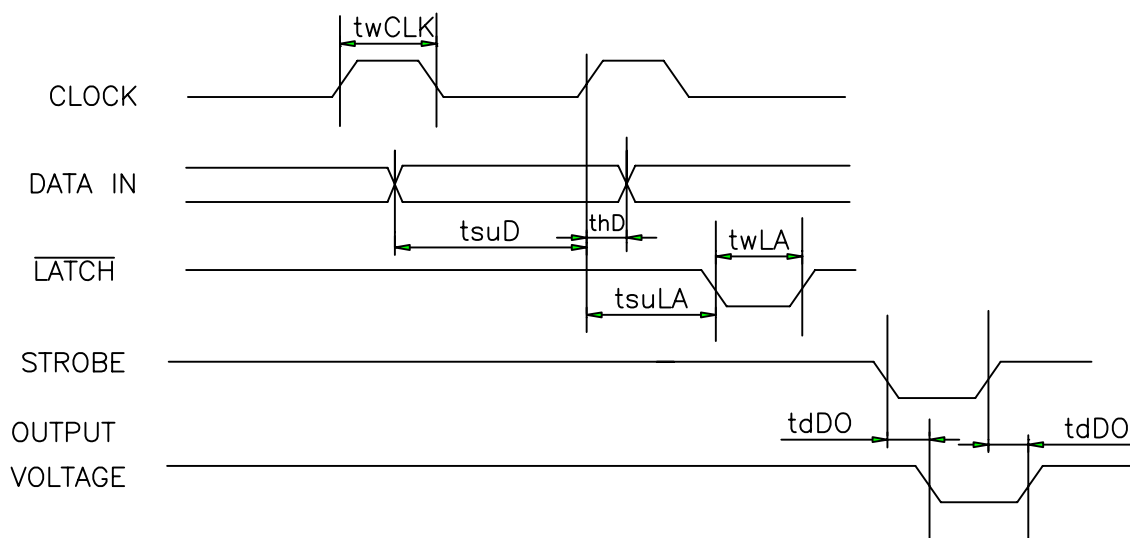


Fig. 2 Thermal Print Head (ND48) Timing Chart

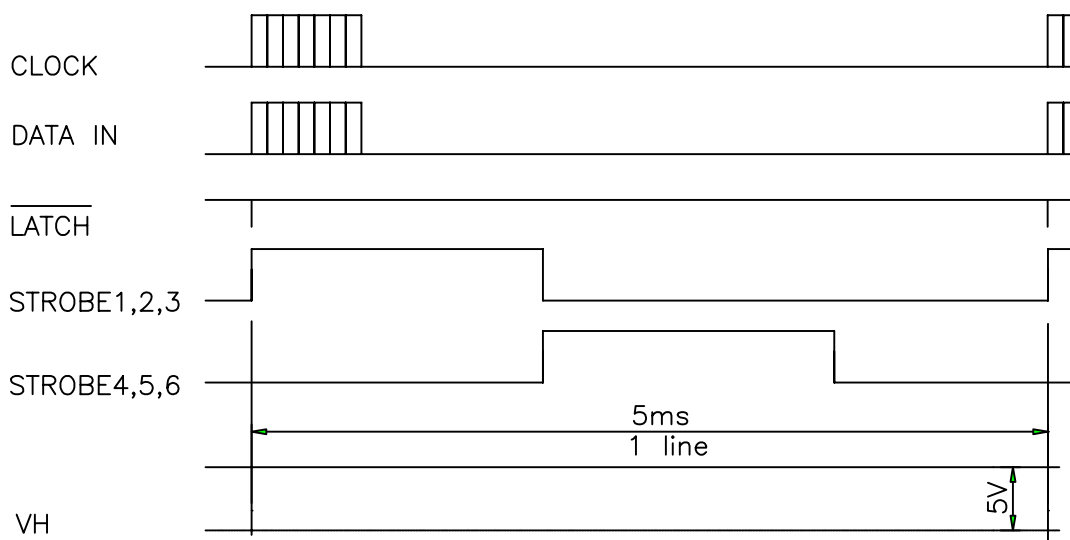


Fig. 3 Schematic Diagram

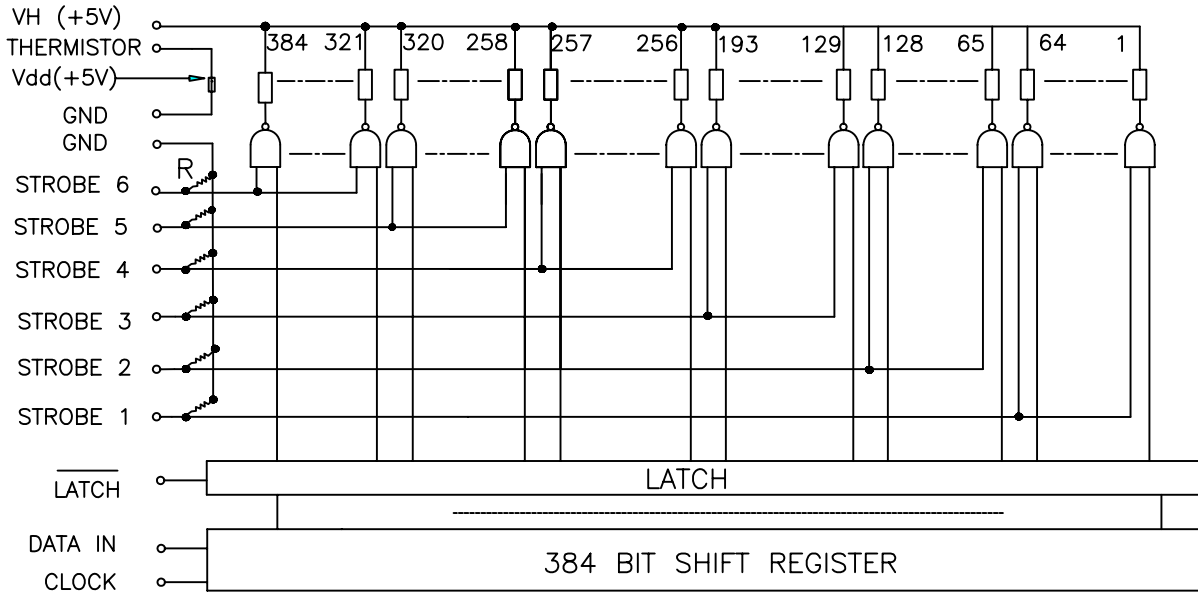


Fig. 4 Cross Section

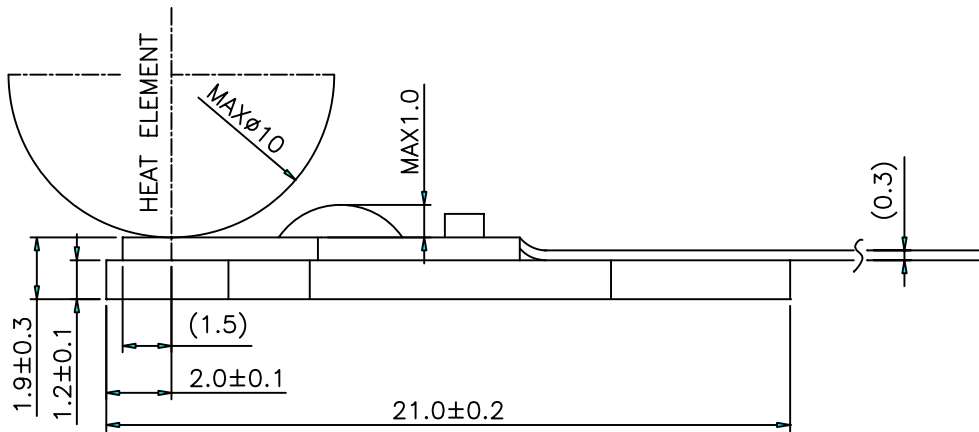


Table. 3 Pin assignment

PIN	NAME	PIN	NAME
1	VH	11	STROBE5
2	VH	12	STROBE6
3	GND	13	\overline{LATCH}
4	GND	14	CLOCK
5	Vdd	15	DATA IN
6	THERMISTOR	16	GND
7	STROBE1	17	GND
8	STROBE2	18	GND
9	STROBE3	19	VH
10	STROBE4	20	VH

